



RIPE NCC
RIPE NETWORK COORDINATION CENTRE

Can we measure the (de)centralisedness of the Internet with RIPE Atlas?

(De)centralisedness? Disclaimers

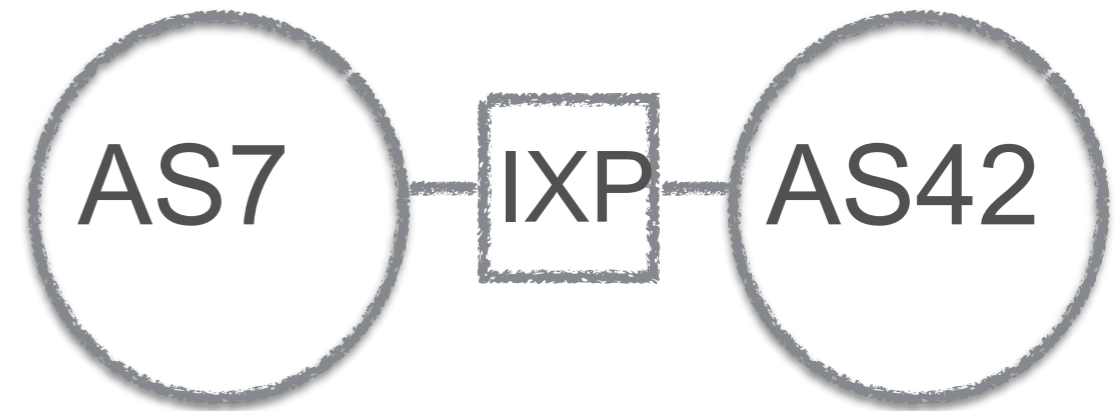


- What is the (de)centralised Internet?
- My focus
 - (De)centralised infrastructure
- Current Internet: client -> server (server is centralised)
- For (de)centralisedness -> go back to true end-to-end (ie. user to user)?

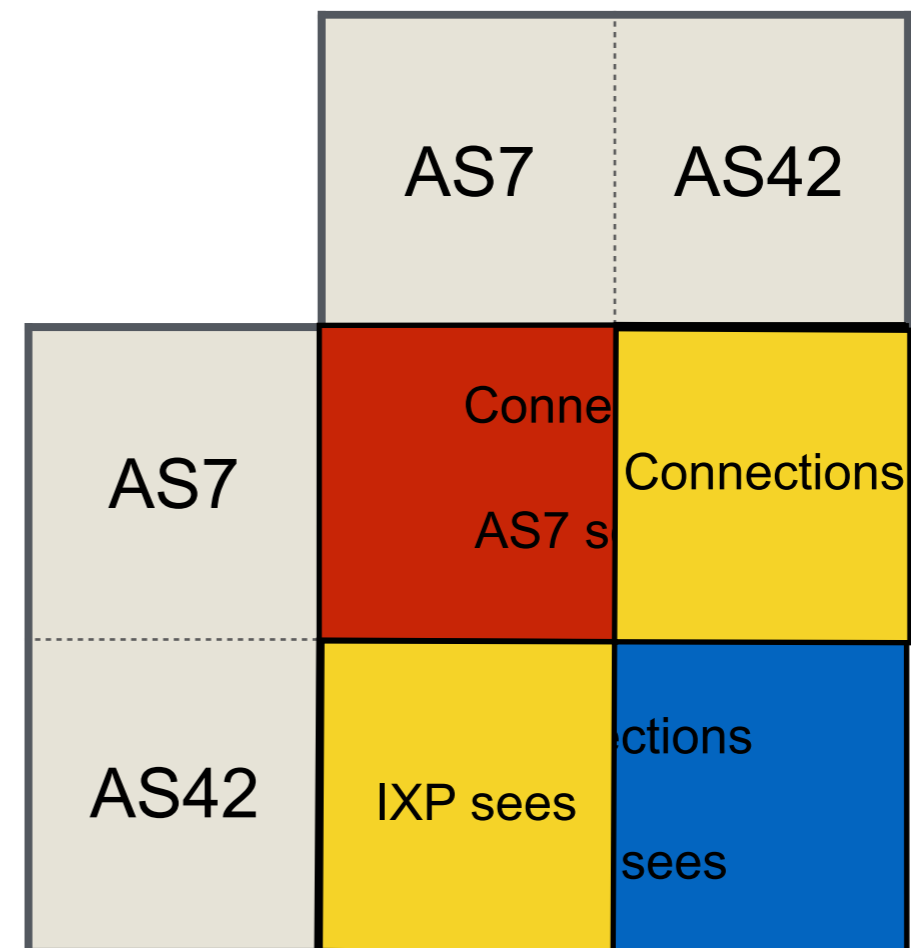
Toy Example



- 2 networks
 - 50% users each,
 - 1 IXP between



- Networks both see 75% of connections
- IXP sees 50%
- nr. users \neq nr. connections



Measure this (de)centralisedness?



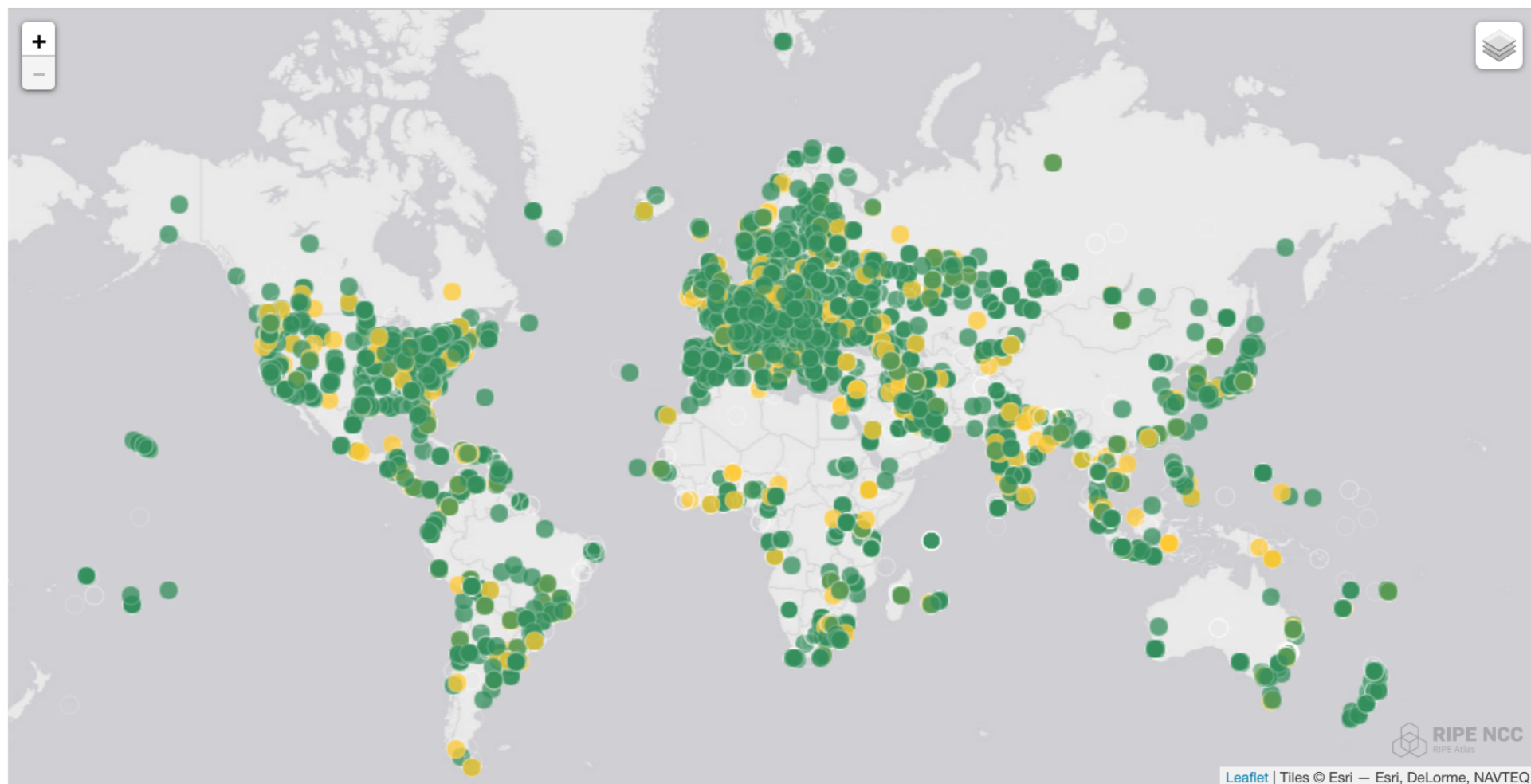
- Assuming all user to user communication channels are equally important, we need:
 - A. Representative vantage points in all user networks
 - B. Estimates of populations in user networks
 - C. A tool that measures all the “things” between these vantage points





Ingredient (A): RIPE Atlas

- Measure the Internet!
 - By community, for community
- It's on Wikipedia: https://en.wikipedia.org/wiki/RIPE_Atlas



Ingredients (B) + (C)



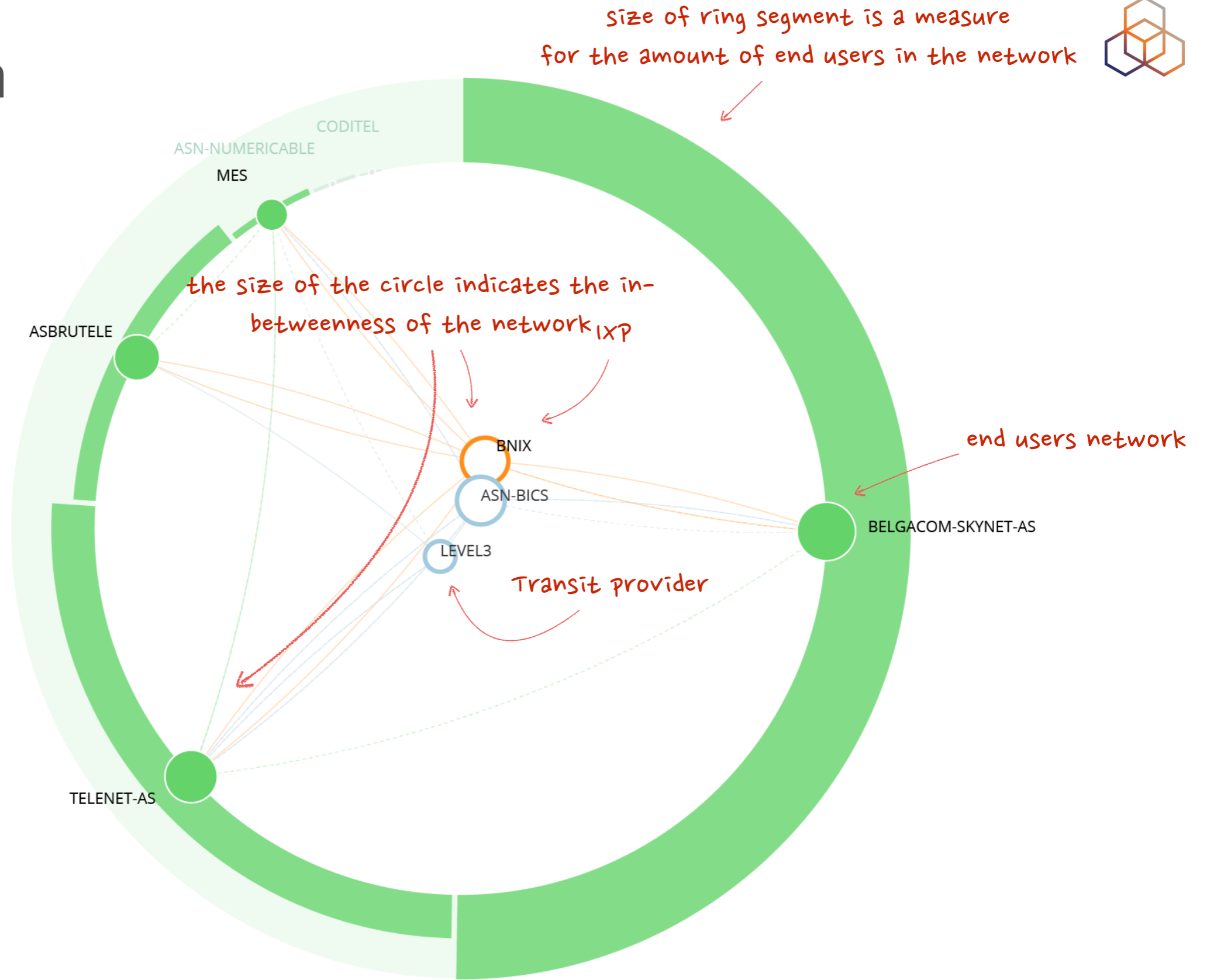
- (B) User population estimates (APNIC data)
 - measurement-based rough estimate
 - <https://stats.labs.apnic.net/aspop/>
- (C) IXP-country-jedi
 - <https://www.ripe.net/ixp-country-jedi/>
 - mesh traceroutes between RIPE Atlas probes in a country
 - measures and analyses (using OpenIPMap)
- Many caveats: Results are 'sketches'



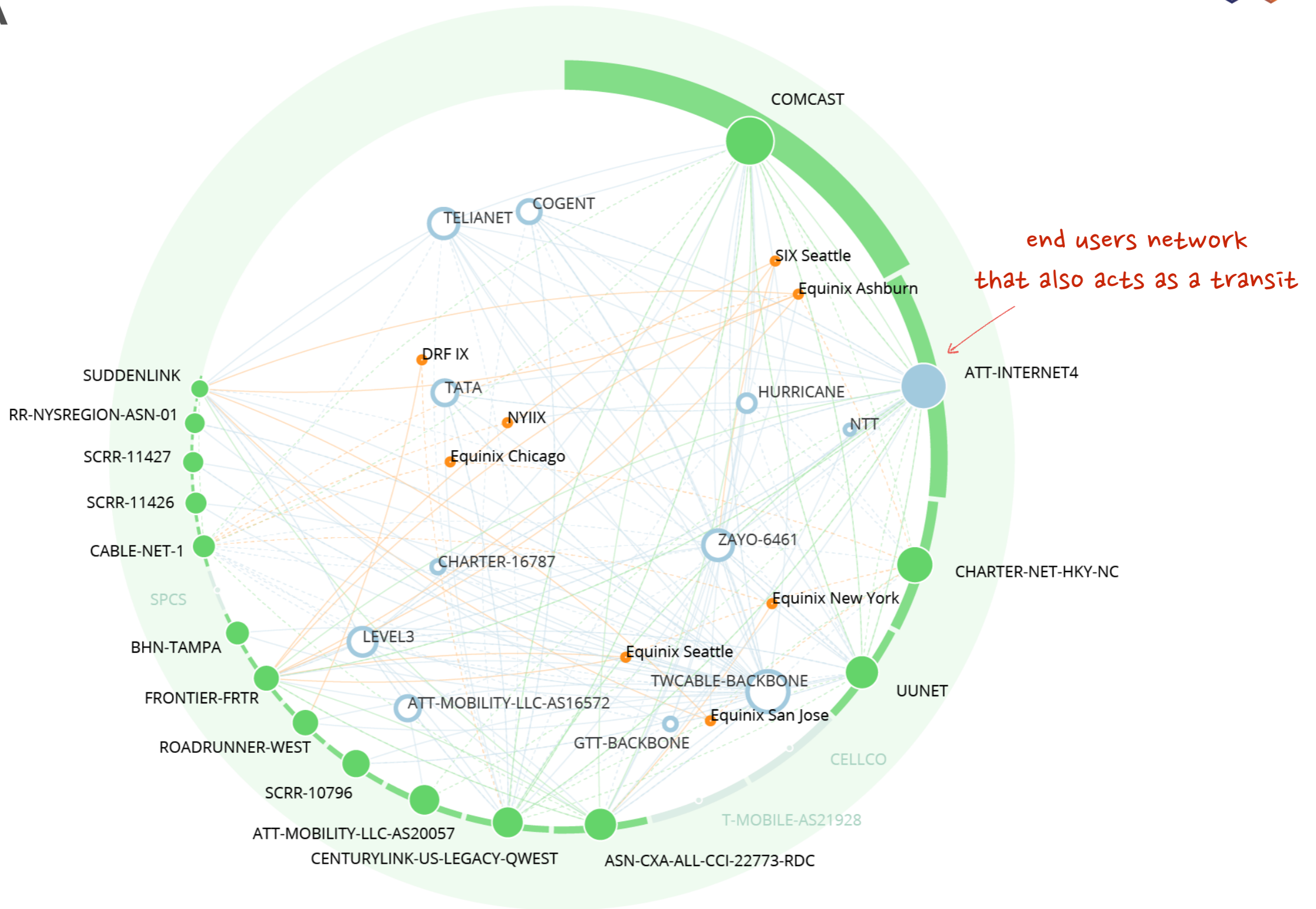
Show me the Data!

Section subtitle

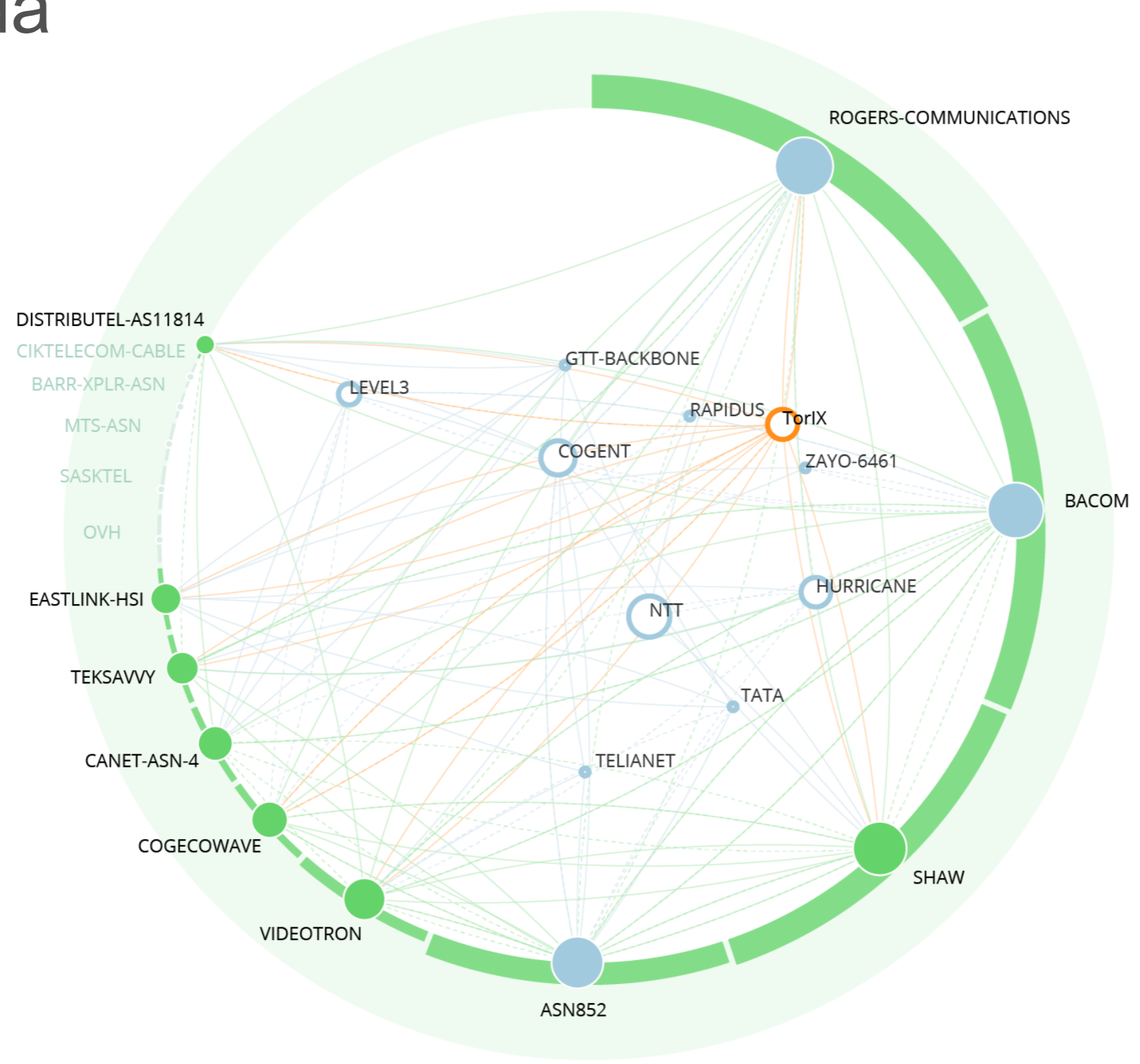
Belgium



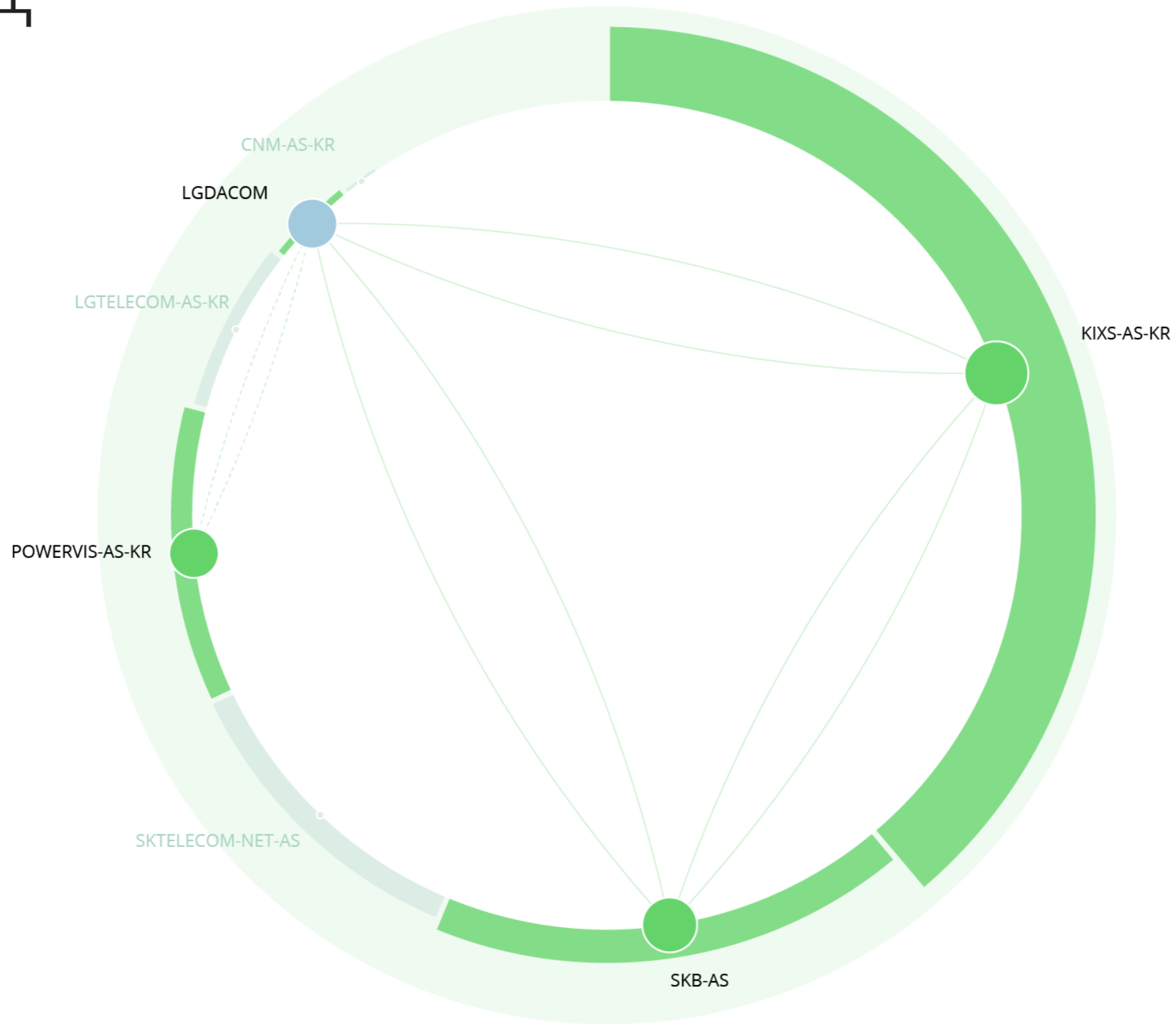
USA



Canada

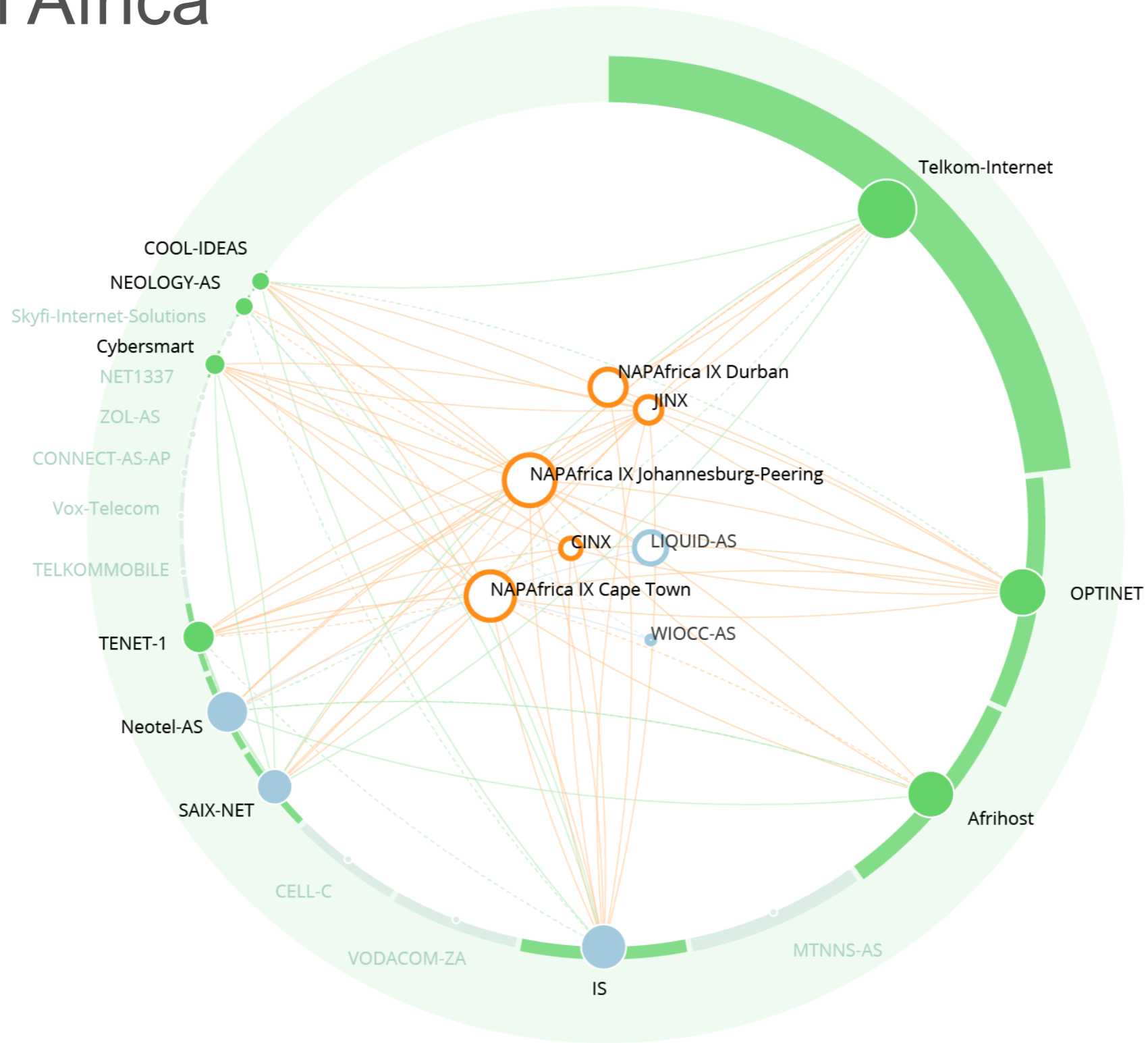


대한민국





South Africa



Mexico





RIPE NCC
RIPE NETWORK COORDINATION CENTRE

Can we measure the
(de)centralisedness of
the Internet with RIPE

**Yes! We can create sketches of
what infrastructure is between
users**

Next Steps



- Validate the model
 - Can you poke holes in it?
 - Does it look right for countries you know?
- Do this for decentralised networks?
 - Any takers?
 - Add RIPE Atlas probes to your networks, and label them
 - “hackerspaces-jedi”: <https://labs.ripe.net/Members/becha/the-next-42-ripe-atlas-probes-at-hackerspaces>
 - Or use similar methodology with data + path-measurement-tools at your disposal

More Info



- <https://github.com/emileaben/ixp-country-jedi/>
- <http://sg-pub.ripe.net/ixp-country-jedi/XX/2018/01/01/>



Your country code here!!

- Upcoming: RIPE Labs blog post about this!



<https://labs.ripe.net/>



Questions



emile.aben@ripe.net
@meileaben

credits:

viz: Jasper Den Hertog @density215
ideas: Vesna Manojlovic @Ms_Multicolor
analysis: Petros Gkigkis @GigisPetros



RIPE NCC
RIPE NETWORK COORDINATION CENTRE

RIPE NCC Community Building

Vesna Manojlovic
BECHA@ripe.net

FOSDEM | 2018 | Brussels

RIPE NCC Community Building



- RIPE meetings
 - RACI programme / RIPE Fellowship / Diversity TF
- Other events organised by RIPE NCC
 - Regional meetings / Training courses & on-line education / Hackathons
- Community support
 - NOG support / Community Projects Fund
- RIPE Atlas
 - Probe hosts / Anchor hosts / Ambassadors / Sponsors / FLOSS Devs
- RIPE Labs



RIPE Meetings

RIPE Meetings



- Twice a year, whole week long
- Working groups, plenary sessions, tutorials
 - Remote participation possible
 - tickets: week (€ 350), day (€ 125), student/week (€ 50)
 - new LIRs get two “gratis” tickets
- RIPE 76: Marseille, France: 14-18 May, 2018
 - <https://ripe76.ripe.net>
- RIPE 77: Amsterdam: 15-19 October 2018
 - <https://www.ripe.net/participate/meetings>



- Students and researchers:
 - Present your Internet-related research at RIPE Meetings
 - Complimentary tickets, travel and accommodation
 - Topics: network measurement and analysis, security, IPv6 deployment, BGP routing, Internet governance, peering and interconnectivity, IoT
- ripe.net/raci

RIPE Fellowship



- Get support to attend RIPE meeting
 - Removing the cost barrier
 - Increasing diversity
 - <https://labs.ripe.net/Members/agowland/apply-now-for-new-ripe-fellowship-programme>
- Five fellows/fellow-esses per meeting
 - Complimentary tickets, travel and accommodation provided
- Apply from February 2018
 - <https://www.ripe.net/participate/ripe/ripe-fellowship>

RIPE Diversity Task Force



- Diversity is important!
- Started a Task Force to coordinate the efforts
 - <https://www.ripe.net/participate/ripe/tf/ripe-diversity-task-force>
- Mailing list:
 - <https://lists.ripe.net/mailman/listinfo/diversity>
- Articles:
 - <https://labs.ripe.net/diversity>



Other Meetings

Regional Meetings



- Once a year:
- MENOOG
- ENOOG
- SEE
- <https://www.ripe.net/participate/meetings/regional-meetings>
- Open to everyone
- Also: mailing lists for regional cooperations

Next Regional Meeting

ENOOG 15 / RIPE NCC Regional Meeting
04 Jun 2018 - 05 Jun 2018 Moscow, Russia

SEE 7 / RIPE NCC Regional Meeting
18 Jun 2018 - 19 Jun 2018 Timisoara, Romania



Training courses

- Six different types
- Every week, all over RIPE NCC region
 - LIRs/members only
 - One day, or two day, or with a lab / workshop
- On-line options: Academy, Webinars, Tutorials
 - open to everyone
- ripe.net/training / training@ripe.net



Community Support

NOG Support



- (country) Network Operators Groups
 - e.g. SwiNOG, iNOG, NLNOG, UKNOF, RSNOG, DENOG...
- labs.ripe.net/nogs
- An overview of events, a calendar, and a map
- RIPE NCC has funding for NOG meetings
 - supporting mostly new or smaller NOGs
- Please ask if you want us to send a speaker

Community Projects Fund



- Very new, first time this year!
- RIPE NCC is financially supporting projects that benefit Internet community (250,000 Euro)
- Info: <https://www.ripe.net/support/cpf/ripe-ncc-community-projects-fund>
- Apply: <https://www.ripe.net/support/cpf/application-for-good-of-the-internet-funding>
- Deadline: 24 November!



Previous RIPE NCC Hackathons



- labs.ripe.net/hackathons
 - RIPE Atlas DataViz (March 2015)
 - RIPE Atlas Tools for Operators (October 2015)
 - RIPE Atlas Interfaces (April 2016)
 - IXP Tools (October 2016)
 - IXP Tools Code-Sprint (April 2017)
 - DNS Measurements (April 2017)
 - Version6 (November 2017)
- All [code on GitHub](#)

Future Participation in Hackathons



- Use the software and tools
 - Share your use cases and success stories
- Modify the code, contribute improvements
 - All the code is on GitHub
- Early call for 2018
 - Two events planned: Spring and Autumn 2018
 - Be a host / local partner / juror / sponsor
 - Be a participant again :)
- Watch this page: <https://labs.ripe.net/hackathons>



RIPE Atlas



- Main page
- Contents
- Featured content
- Current events
- Random article
- Donate to Wikipedia
- Wikipedia store

- Interaction
 - Help
 - About Wikipedia
 - Community portal
 - Recent changes
 - Contact page

- Article
- Talk**
- Read
- Edit source
- Edit
- ★
- More ▾

RIPE Atlas

From Wikipedia, the free encyclopedia

RIPE Atlas is a global, open, distributed Internet measurement platform, consisting of thousands of measurement devices that measure Internet connectivity in real time.

Contents [hide]

- History
- Technical details
- Community
- Research papers
- Similar projects
- References
- External links
- Categories



Most Popular Features

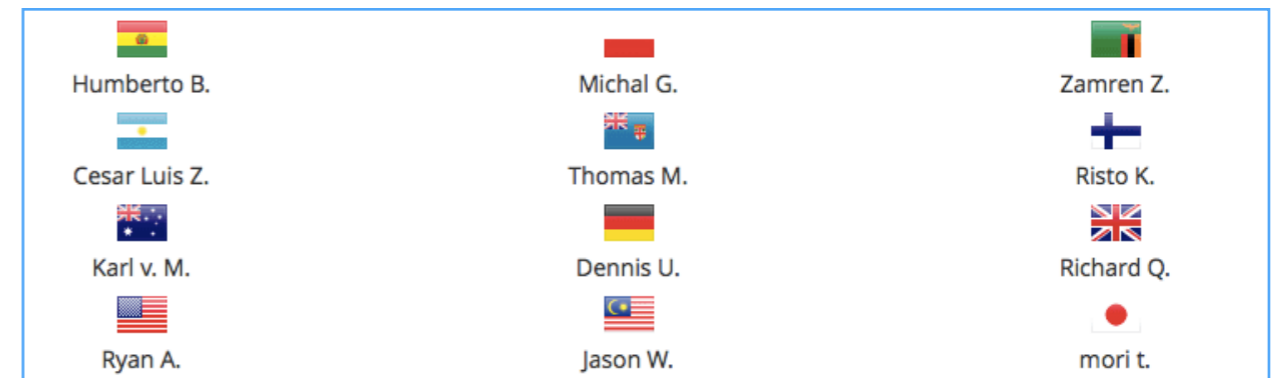


- Six types of measurements: ping, traceroute, DNS, SSL/TLS, NTP and HTTP (to anchors)
- APIs to start measurements and get results
- Powerful and informative visualisations
- CLI tools
- Streaming data: real-time results
- “Time Travel”, LatencyMON, DomainMON, TraceMON
- Roadmap shows what’s completed and coming

RIPE Atlas Community Participation



- 19,000 probes given to volunteers / hosts
 - out of that, 10,000+ active
- 36,000 users
- 311 anchors hosted by operators
- On average five sponsors every year
- 400+ ambassadors, at many conferences
 - <https://atlas.ripe.net/landing/get-involved/>
 - <https://atlas.ripe.net/get-involved/community/>





Get Involved!

- Use RIPE Atlas for your operations: monitoring, troubleshooting, measuring
- Do scientific research
- Participate in a webinar
- Add multi-lingual content
- Become an ambassador or a sponsor
- Host a RIPE Atlas anchor
- Place a probe in a new exotic location

More info & contacting RIPE Atlas



- <https://atlas.ripe.net>
- Use cases and updates: <https://labs.ripe.net/atlas>
- Mailing list for active users:
 - ripe-atlas@ripe.net
 - <https://www.ripe.net/participate/mail/forum/ripe-atlas>
- Questions: atlas@ripe.net
- Twitter: [@RIPE_Atlas](https://twitter.com/RIPE_Atlas) and [#RIPEAtlas](https://twitter.com/hashtag/RIPEAtlas)



- Publish your research or use case
- Reach out to RIPE Community
- Read about latest analysis or conferences
- labs.ripe.net

End of hackathon: GRATITUDE!



- Big thanks to:
 - Comcast - our sponsor!
 - DKNOG - local support!
 - ITU.dk - our location host!
 - JURORS!
 - ... and of course ALL OF THE PARTICIPANTS!!!
 - and to your families who are missing you this weekend, and gave you support to prepare, travel & recover :)

End of hackathon: Give us feedback!



- What did you like?
 - coffee? stickers? T-shirts?
 - VMs?
 - communications channels?
 - stroopwafels??
- What could have been better?
 - we'd like to improve for the next time!
- BECHA@ripe.net