



RIPE NCC

RIPE NETWORK COORDINATION CENTRE

RIPEstat

emile.aben@ripe.net | 2018-02 | USJ

RIPEstat



- Access to these datasets:
 - RIPE Database (INR, IRR) and other RIRs
 - BGP routing data (RIS)
 - RIPE Atlas, M-Lab, Speedchecker, etc.
 - Geolocation
 - Blacklist



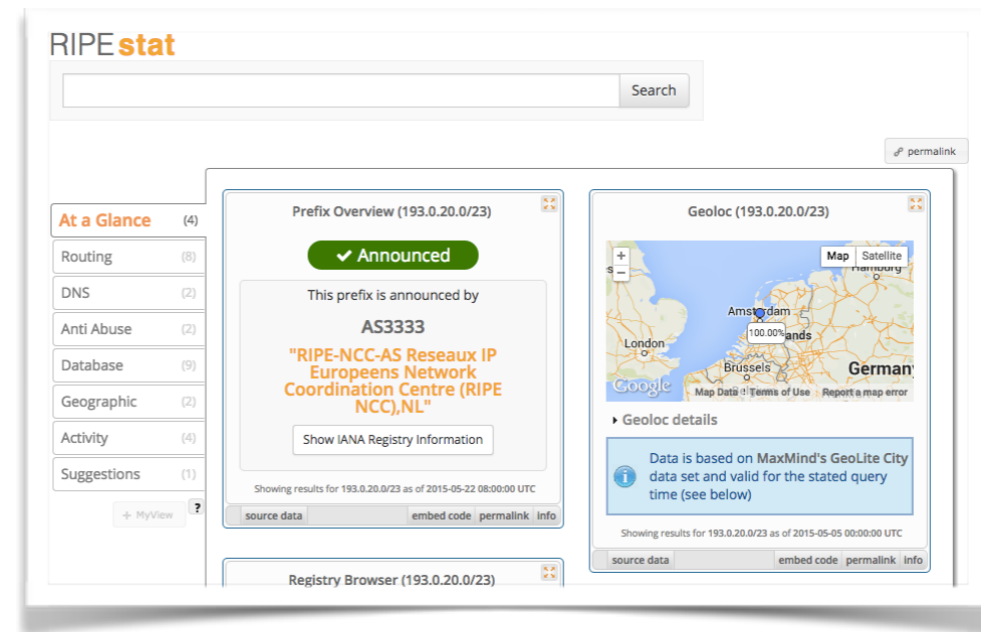
- New datasets are constantly added!



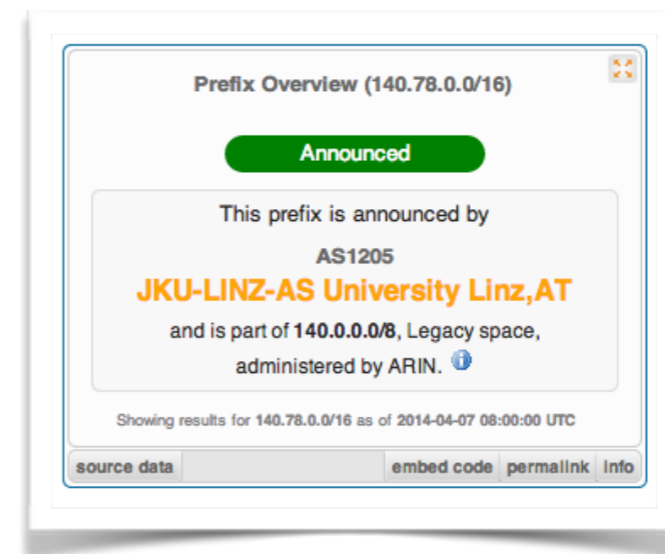
RIPEstat



- <https://stat.ripe.net>



- RIPEstat widget API



- RIPEstat data API

- [https://stat.ripe.net/data/routing-status/data.json?
resource=...](https://stat.ripe.net/data/routing-status/data.json?resource=...)



Manage IPs and ASNs > Analyse

You are here: Home > Analyse > Statistics > RIPE

RIPEstat Home <<

About RIPEstat >

Documentation >

Use Cases >

Your IP address is:
2001:67c:2e8:9::c100:14e6

System Statistics

1,429,622

Requests seen in the last full hour on RIPEstat

On RIPE Labs

New Feature: Easily Embed your RIPEstat Widgets in RIPE Labs Articles

Supported resources:

- * IP address/prefix (v4/v6)
- * ASN
- * Domain names
- * Country

Your network: AS3333, 2001:67c:2e8::/48

e.g.: IPv4 prefix/range, IPv6, ASN

RIPEstat Data API

RESTful. Versatile.
And all about data.



RIPEstat - Data API



- More than 50 data calls
- Documentation:
https://stat.ripe.net/docs/data_api
- Building blocks
- Integration in open tools

Rosiak commented on 2 Oct 2015 Contributor

- Whois
- Abuse Finder
- Geolocate
- Looking Glass
etc.

https://stat.ripe.net/docs/data_api

Rosiak added the **Feature-Request** label on 2 Oct 2015

Rosiak commented on 3 Oct 2015 Contributor

Quick example, thoughts?:

The screenshot shows the LibreNMS interface with a navigation bar at the top containing 'Overview', 'Devices', 'Ports', 'Health', and 'Plugins'. Below the navigation bar, the 'RIPE NCC Tools' section is visible, featuring a 'Whois' label and a text input field with a 'Query' button next to it.

Overview
Data Calls
Abuse Contact Finder
Address Space Hierarchy
Address Space Usage
Allocation History
Announced Prefixes
AS Overview
AS Path Length
AS Routing Consistency
ASN Neighbours
ASN Neighbours History
Atlas Probe Deployment
Atlas Probes
Atlas Targets
BGPlay
BGP State
BGP Updates
BGP Update Activity
Blacklist
Country ASNs
Country Resource Stats
Country Resource List
DNS Chain
Example Resources
Geolocation
Geolocation History
IANA Registry Info
Looking Glass
M-lab Activity Count
M-lab Bandwidth
M-lab Clients
Network Info
Prefix Count
Prefix Overview
Prefix Routing Consistenc...
Prefix Size Distribution
Registry Browser
RIR
RIR Prefix Size Distribut...
RIS Asns
RIS First-Last-Seen
RIS Prefixes
RIS Peerings
RIS Peer Count
Related Prefixes
Reverse DNS
Reverse DNS IP
Reverse DNS Consistency
Routing History
Routing Status
Searchcomplete
Speedchecker Bandwidth Me...
Visibility
Whats My Ip
Whois
Whois Object Last Updated



RIPEstat - Widget API

- HTML5/CSS/JS applications
- Standard Javascript
 - JQuery
 - Require.js
- More than 50 widgets
- Documentation
 - https://stat.ripe.net/docs/widget_api
- Embed into NOC dashboards?

RIPEstat Examples



[EXPAND EVERYTHING]

BGP Looking Glass (195.137.160.0/24)

- ▼ 14 RRCs see 115 peers announcing 195.137.160.0/24 originated by AS6697.
 - ▶ RRC11 in New York City, New York, US sees 1 ASN originating 195.137.160.0/24. (AS6697)
 - ▶ RRC10 in Milan, Italy sees 1 ASN originating 195.137.160.0/24. (AS6697)
 - ▶ RRC00 in Amsterdam, Netherlands sees 1 ASN originating 195.137.160.0/24. (AS6697)
 - ▶ RRC01 in London, United Kingdom sees 1 ASN originating 195.137.160.0/24. (AS6697)
- ▼ RRC15 in Sao Paulo, Brazil sees 1 ASN originating 195.137.160.0/24. (AS6697)
 - ▼ AS6697 is seen as the origin by 14 peers.
 - ▼ 187.16.217.48 is announcing route AS16735 AS41095 AS6697.

```
187.16.217.48 from 187.16.217.48 (200.225.196.252)
Origin IGP, localpref 100, valid, external, best
Community: 16735:5 16735:6101
Last update: Mon Sep 25 13:17:37 2017
```
 - ▼ 187.16.220.193 is announcing route AS263584 AS263321 AS7738 AS41095 AS6697.

```
187.16.220.193 from 187.16.220.193 (177.129.136.254)
Origin IGP, localpref 100, valid, external
Last update: Tue Oct 3 04:19:37 2017
```

Country data



- <https://stat.ripe.net/LB>
- Registry info in machine parsable format:
 - <https://stat.ripe.net/data/country-resource-list/data.json?resource=LB>